

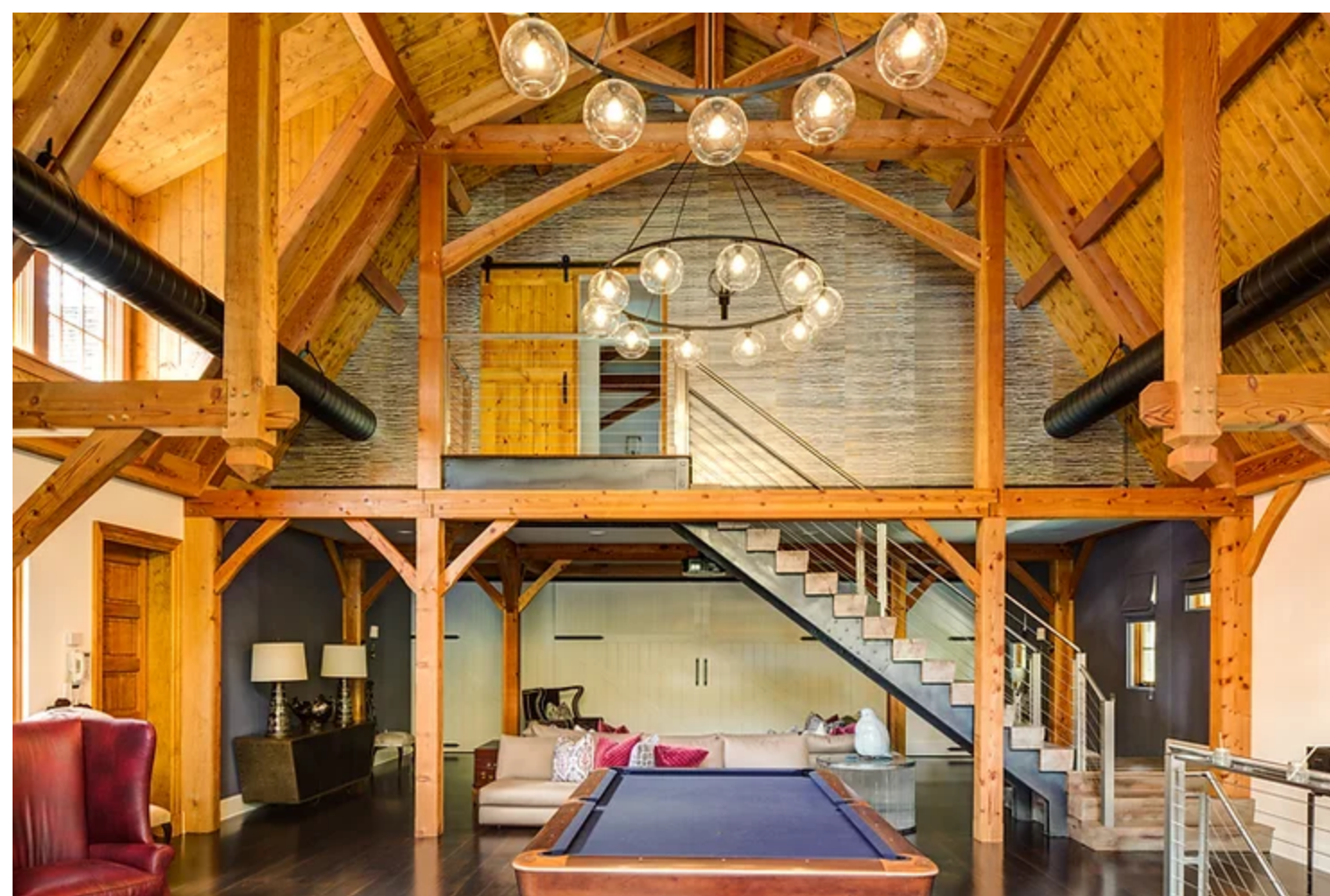
PRINT ARTICLE >

Tom Curnin · Aug 8, 2020 · 2 min read

The Best Smart Lighting For Interior Design

Updated: Sep 6, 2020

The Value of Smart Lighting for Interior Design



The Best Smart Lighting For Interior Design

Start here to learn everything about Lutron Lighting.

Often, Lutron lighting control is seen as a way to simplify turning the lights on and off – trading in a manual light switch for a more elegant, efficient version. And while it's true that smart lighting does make the process of controlling your lights much easier, its capabilities go far beyond that. For design-savvy homeowners and interior designers throughout Morris County, NJ, Lutron offers a way to elevate the look and feel of each room.

Here are three of our favorite ways to use smart lighting for interior design:

1. Create Layered Lighting Scenes

The right lighting design for the room requires careful consideration of the right brightness and positioning for every fixture. Overhead lights, lamps, spotlights, and more could all go far beyond simply “on and off.” A Lutron system allows you to adjust each individual fixture and then save the entire room’s settings as a predefined “scene.” This saves homeowners from having to walk throughout the room, turning on each light fixture and adjusting the settings individually. Instead, whenever you enter the room, all you need to do is select the appropriate scene for each occasion: entertaining guests, watching a movie, enjoying an intimate dinner – you name it. Each scene is fully customized to each homeowner’s lifestyle and design preferences.

2. Say Goodbye to Wall Clutter

The “wall acne” of traditional light switches and fan switches can all be combined into an elegant keypad. For thermostats, we can remote locate the thermostat and install a discrete sensor in the wall. While you will have conveniently located smart switches and keypads, you can also manage everything from your smartphone or tablet. Another alternative is to install a touchscreen panel directly into the wall – creating a modern and sleek look that offers far more functionality than a light switch. Whatever lighting control system you choose, the result is a cleaner, more sophisticated design on the wall.

3. Choose Your Colors and Finishes

Lutron offers many different styles of switches and keypads in a variety of colors. You can choose from four families of finishes: satin, glass, gloss, or metal. We find that the satin finish is the most popular for New Jersey homes, as there are 20 different colors to choose from. This wide selection of colors and finishes means that you are sure to find something that looks great with the décor of each room.

For additional resources, please visit our page on [Lutron Lighting Control](#) with articles like this on everything you need to know. Additionally, you can check out our photo gallery to explore our previous work.

Bravo AV is proud to be an HTA (Home Technology Association) Certified Installation Firm and professional A/V experts. Tom Curnin, the owner of Bravo AV, is a CEDIA Professional Designer, a certified THX Level 1 home theater professional and a member of the Home Acoustic Alliance trained to Level II.

You can contact Tom directly at (908) 953-0555 or through email at tom@bravoav.com.

- Tags: #LutronLighting #SmartLighting #LutronDealer #AutomatedLighting #SmartLights #LutronLightingNJ #SmartLightingNewJersey #LutronDealerNJ #AutomatedLightingNewJersey #SmartLightsNJ


Automated Lights Smart Lights Lutron Lutron Lighting

Smart Lighting

240 views


Recent Posts

See All




Home Security Tips For Your New Jersey Home

142 views



The Benefits of Landscape Lighting for your New...

75 views



Lutron Radio Ra2 Overview

452 views

What brings you to Bravo AV of New Jersey, and how can we help?

In order to help you in the best way possible please provide your phone number and town. Your number will not be used for solicitation. Your town is important in order to make sure we can provide the outstanding local service we are recognized for.



Knowledge Center

- [Home Audio](#)
- [Home Automation](#)
- [Home Theater](#)
- [Lutron Lighting](#)
- [Motorized Shades](#)
- [Media Rooms](#)
- [Multi-Room Audio](#)
- [Outdoor Shades](#)
- [Outdoor Speakers](#)
- [Outdoor TV](#)
- [Sonos Speakers](#)
- [Surround Sound](#)

Our Services

- [Home Audio](#)
- [Home Automation](#)
- [Home Theater](#)
- [Theater Seating](#)
- [Landscape Lighting](#)
- [Lighting Design](#)
- [Luxury Private Cinemas](#)
- [Media Rooms](#)
- [Mirror TV](#)
- [Motorized Shades](#)
- [Multi-Room Audio](#)
- [Outdoor Entertainment Centers](#)
- [Outdoor Lighting](#)
- [Outdoor Shades](#)
- [Outdoor Speakers](#)
- [Outdoor TV](#)
- [Projectors](#)
- [RadioRa 3](#)
- [Surround Sound](#)
- [TV Installation](#)
- [WiFi](#)
- [Window Treatments](#)

Partners

- [Focal](#)
- [Kaleidescape](#)
- [Lutron Lighting](#)
- [Lutron Shades](#)
- [Meridian](#)
- [Nest](#)
- [Samsung](#)
- [Savant](#)
- [Sonos](#)
- [Sony TVs](#)
- [Sony Projectors](#)
- [TKG](#)

Information

- [About](#)
- [Blog](#)
- [Contact](#)
- [Design | Build Process](#)
- [Featured Projects](#)
- [Knowledge Center](#)
- [Partners](#)
- [Privacy Policy](#)
- [Showroom](#)
- [Team](#)
- [Home Theater Guide](#)

Contact

- [80 Morristown Rd. Bernardsville, NJ 07924](#)
- [Click To Email Us](#)
- [Tel. \(908\) 953-0555](#)



Hours

Mon. - Fri. 9am - 6pm or by appointment

